



**Savannah Dow**

13862150123



## **THE KINGSLEY at SEVEN PINES**

THE KINGSLEY - COASTAL CLASSIC

**6 Bedrooms • 4.5 Bathrooms • 3-Car Garage • 5,222 ft<sup>2</sup> Living Area • 6,308 ft<sup>2</sup> Under Roof**

The Kingsley floor plan combines luxury with functionality, offering a grand two-story foyer, a spacious living room filled with natural light, and a gourmet kitchen with a central island and a butler's pantry. The main-level master suite is a private retreat with dual walk-in closets and a spa-like bath. A second bedroom suite on the main floor is perfect for guests. Upstairs, a large game room and four bedrooms create plenty of space for family and friends. With ICI Homes' customizations, the Kingsley can be tailored to fit your unique lifestyle and design preferences.

\* Renderings may vary from actual home. Please see disclaimer for more details.

**Savannah Dow**  
Oceans Luxury Realty Full Service,

LLC - 3162

13862150123

savdowsells@gmail.com

# THE KINGSLEY

6 Bedrooms • 4.5 Bathrooms • 3-Car Garage

**Seven Pines**  
Jacksonville, FL

**Available In**  
Seven Pines 70 RL

**Living Area:** 5,222 ft<sup>2</sup> **Under Roof:** 6,308 ft<sup>2</sup>

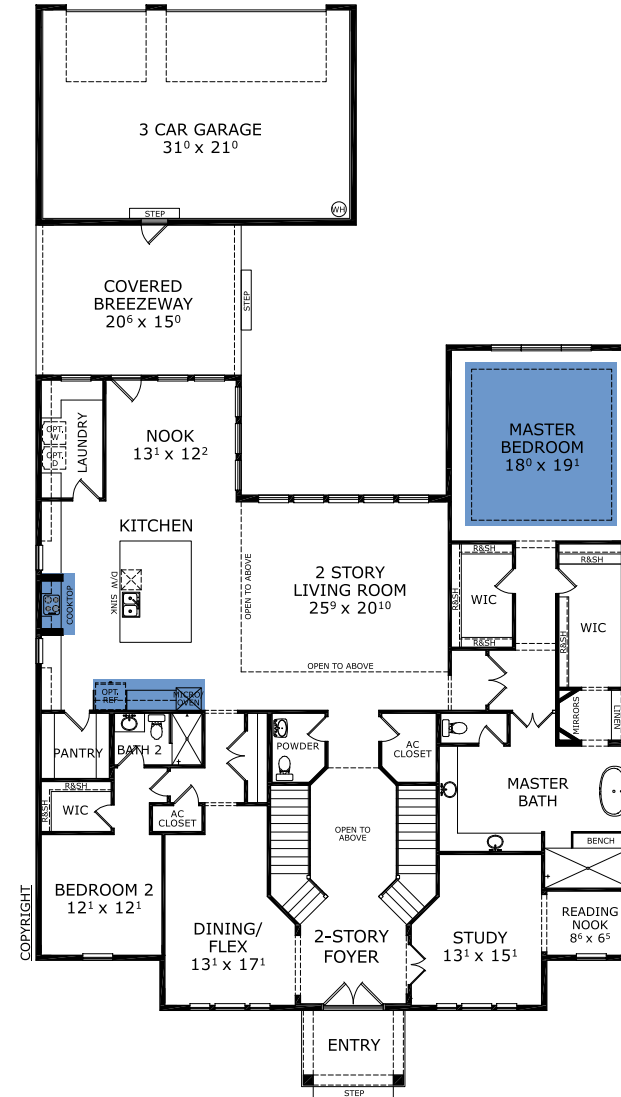
## THE COTTAGE REVIVAL



## THE GREEK REVIVAL



## FIRST FLOOR



©1994-2026 ICI Homes™ is a registered trademark whose divisions operate under CBC1267313, CBC1262114, CBC1262120, CBC1264300, CBC1265743, CRC1333091, and CBC1257263. Features may be plan specific and vary. Please consult a Sales Associate for specific feature information. All new ICI Homes come with a HBW 2-10 warranty. Certain elevations may have additional fees. Prices may not include lot premiums, upgrades, and options. Inventory home completion date may vary. All prices subject to change without notice. All plans are property of ICI Homes and cannot be copied or used without permission. Prices, promotions, incentives, features, options, amenities, floor plans, elevations, site maps, designs, materials, and dimensions are for illustrative purposes only and subject to change without notice. Plans should not be relied upon as representation express or implied of final sizes, locations, features or dimensions. Square footage and dimensions are estimated and may vary from description. All HERS ratings and savings are calculated by a third party energy rating service. Actual savings will depend on a number of factors, including but not limited to daily activities, home maintenance practices, household size, use of appliances, lighting and internal climate control systems, lot orientation, and surrounding climate and weather conditions. Created on 06/25/2026: \_\_\_\_\_ Garage Orientation R / L: \_\_\_\_\_



# THE KINGSLEY

6 Bedrooms • 4.5 Bathrooms • 3-Car Garage

Seven Pines  
Jacksonville, FL

Available In  
Seven Pines 70 RL

Living Area: 5,222 ft<sup>2</sup> Under Roof: 6,308 ft<sup>2</sup>

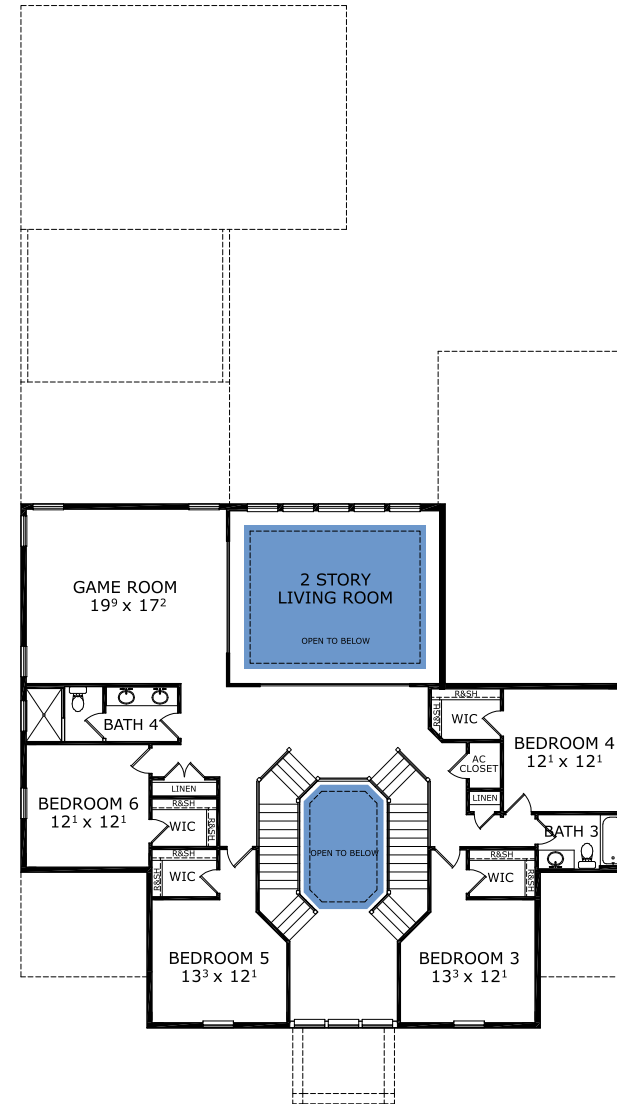
## THE COTTAGE REVIVAL



## THE GREEK REVIVAL



## SECOND FLOOR



©1994-2026 ICI Homes™ is a registered trademark whose divisions operate under CBC1267313, CBC1262114, CBC1262120, CBC1264300, CBC1265743, CRC1333091, and CBC1257263. Features may be plan specific and vary. Please consult a Sales Associate for specific feature information. All new ICI Homes come with a HBW 2-10 warranty. Certain elevations may have additional fees. Prices may not include lot premiums, upgrades, and options. Inventory home completion date may vary. All prices subject to change without notice. All plans are property of ICI Homes and cannot be copied or used without permission. Prices, promotions, incentives, features, options, amenities, floor plans, elevations, site maps, designs, materials, and dimensions are for illustrative purposes only and subject to change without notice. Plans should not be relied upon as representation express or implied of final sizes, locations, features or dimensions. Square footage and dimensions are estimated and may vary from description. All HERS ratings and savings are calculated by a third party energy rating service. Actual savings will depend on a number of factors, including but not limited to daily activities, home maintenance practices, household size, use of appliances, lighting and internal climate control systems, lot orientation, and surrounding climate and weather conditions. Created on 06/25/2026: \_\_\_\_\_ Garage Orientation R / L: \_\_\_\_\_

