



Savannah Dow

13862150123



THE DAISY at OAKMONT

THE COASTAL MODERN

3 Bedrooms • 2 Bathrooms • 2-Car Garage • 1,773 ft² Living Area • 2,415 ft² Under Roof

The Daisy is a beautifully efficient 1,773-square-foot home with three bedrooms and two baths, designed to blend spaciousness and coziness. High 12-foot ceilings and an open layout give the kitchen, dining, and living rooms a welcoming, expansive feel, perfect for both relaxation and entertaining. The master suite, with a tray ceiling, walk-in closet, and spa-like bath, provides a private retreat, while two additional bedrooms offer comfort for family or guests. With flexible options for the garage, lanai, and study, the Daisy can be customized to fit your lifestyle, making it an ideal choice for a comfortable, adaptable home.

*** Renderings may vary from actual home. Please see disclaimer for more details.**

Savannah Dow
Oceans Luxury Realty Full Service,
LLC - 3162
13862150123
savdowsells@gmail.com

THE DAISY

3 Bedrooms • 2 Bathrooms • 2-Car Garage

Oakmont
Gainesville, FL

Available In
Oakmont 50 RL

Living Area: 1,773 ft² **Under Roof:** 2,415 ft²

THE FARMHOUSE



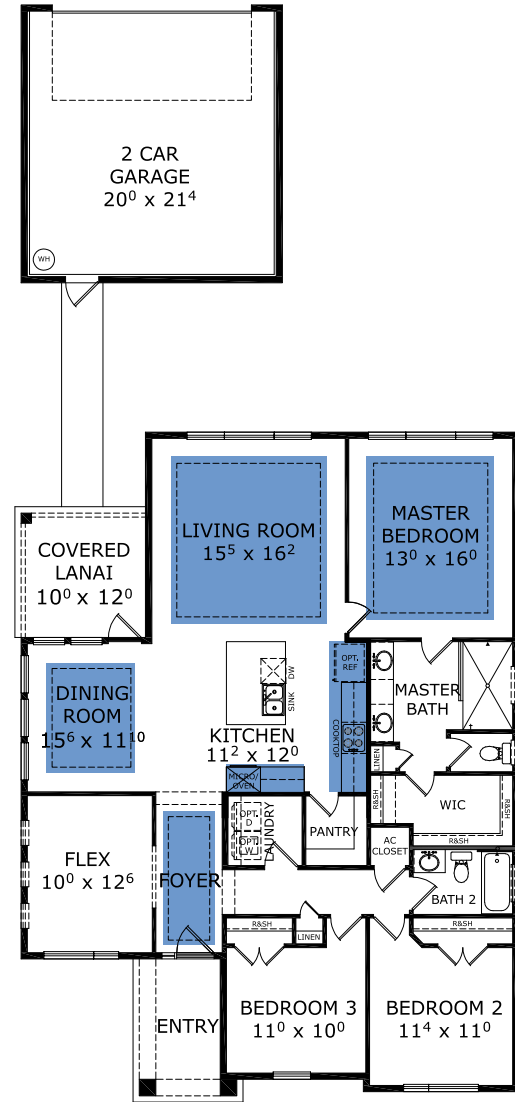
THE CRAFTSMAN



THE TRANSITIONAL



FIRST FLOOR



©1994-2026 ICI Homes™ is a registered trademark whose divisions operate under CBC1267313, CBC1262114, CBC1262120, CBC1264300, CBC1265743, CRC1333091, and CBC1257263. Features may be plan specific and vary. Please consult a Sales Associate for specific feature information. All new ICI Homes come with a HBW 2-10 warranty. Certain elevations may have additional fees. Prices may not include lot premiums, upgrades, and options. Inventory home completion date may vary. All prices subject to change without notice. All plans are property of ICI Homes and cannot be copied or used without permission. Prices, promotions, incentives, features, options, amenities, floor plans, elevations, site maps, designs, materials, and dimensions are for illustrative purposes only and subject to change without notice. Plans should not be relied upon as representation express or implied of final sizes, locations, features or dimensions. Square footage and dimensions are estimated and may vary from description. All HERS ratings and savings are calculated by a third party energy rating service. Actual savings will depend on a number of factors, including but not limited to daily activities, home maintenance practices, household size, use of appliances, lighting and internal climate control systems, lot orientation, and surrounding climate and weather conditions. Created on 06/25/2026: _____ Garage Orientation R / L: _____

