



Savannah Dow

13862150123



THE ASPEN at SILVERLEAF

THE ASPEN - COASTAL

6 Bedrooms • 4.5 Bathrooms • 3-Car Garage • 4,972 ft² Living Area • 6,044 ft² Under Roof

Discover the Aspen, a 4,972 sq. ft. masterpiece by ICI Homes with six bedrooms, 4.5 baths, and a three-car garage. The two-story living room, gourmet kitchen with a hidden pantry, and luxurious master suite provide elegant functionality. A spacious game room, multiple bedrooms, and optional media room offer endless entertainment and comfort. With ICI Homes' unique customization capabilities, including wall-moving and personalized finishes, the Aspen is designed to adapt to your lifestyle, creating a dream home that's truly yours.

* Renderings may vary from actual home. Please see disclaimer for more details.

Savannah Dow
Oceans Luxury Realty Full Service,

LLC - 3162

13862150123

savdowsells@gmail.com

THE ASPEN

6 Bedrooms • 4.5 Bathrooms • 3-Car Garage

Silverleaf Available In
St. Augustine, FL Silverleaf 80

Living Area: 4,972 ft² **Under Roof:** 6,044 ft²

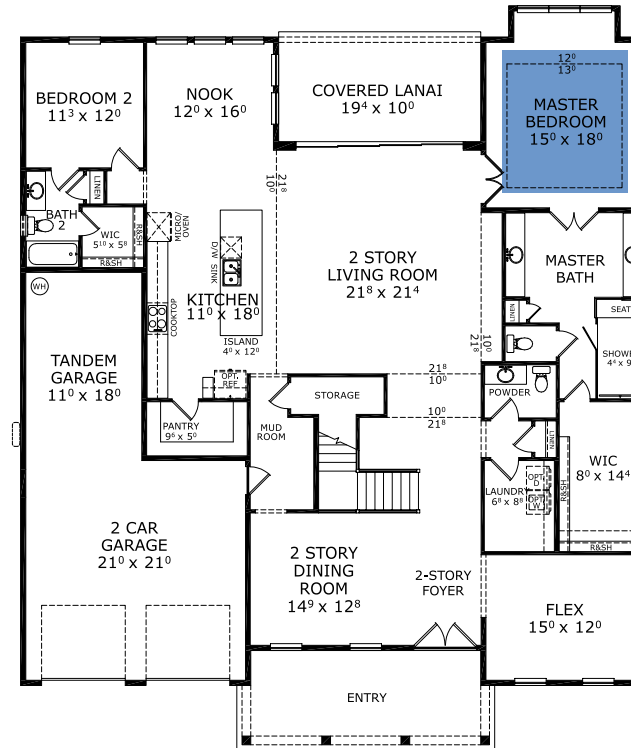
THE FARMHOUSE



THE WEST INDIES



FIRST FLOOR



©1994-2026 ICI Homes™ is a registered trademark whose divisions operate under CBC1267313, CBC1262114, CBC1262120, CBC1264300, CBC1265743, CRC1333091, and CBC1257263. Features may be plan specific and vary. Please consult a Sales Associate for specific feature information. All new ICI Homes come with a HBW 2-10 warranty. Certain elevations may have additional fees. Prices may not include lot premiums, upgrades, and options. Inventory home completion date may vary. All prices subject to change without notice. All plans are property of ICI Homes and cannot be copied or used without permission. Prices, promotions, incentives, features, options, amenities, floor plans, elevations, site maps, designs, materials, and dimensions are for illustrative purposes only and subject to change without notice. Plans should not be relied upon as representation express or implied of final sizes, locations, features or dimensions. Square footage and dimensions are estimated and may vary from description. All HERS ratings and savings are calculated by a third party energy rating service. Actual savings will depend on a number of factors, including but not limited to daily activities, home maintenance practices, household size, use of appliances, lighting and internal climate control systems, lot orientation, and surrounding climate and weather conditions. Created on 06/25/2026: _____ Garage Orientation R / L: _____



THE ASPEN

6 Bedrooms • 4.5 Bathrooms • 3-Car Garage

Silverleaf Available In
St. Augustine, FL Silverleaf 80

Living Area: 4,972 ft² **Under Roof:** 6,044 ft²

THE FARMHOUSE



THE WEST INDIES



SECOND FLOOR



©1994-2026 ICI Homes™ is a registered trademark whose divisions operate under CBC1267313, CBC1262114, CBC1262120, CBC1264300, CBC1265743, CRC1333091, and CBC1257263. Features may be plan specific and vary. Please consult a Sales Associate for specific feature information. All new ICI Homes come with a HBW 2-10 warranty. Certain elevations may have additional fees. Prices may not include lot premiums, upgrades, and options. Inventory home completion date may vary. All prices subject to change without notice. All plans are property of ICI Homes and cannot be copied or used without permission. Prices, promotions, incentives, features, options, amenities, floor plans, elevations, site maps, designs, materials, and dimensions are for illustrative purposes only and subject to change without notice. Plans should not be relied upon as representation express or implied of final sizes, locations, features or dimensions. Square footage and dimensions are estimated and may vary from description. All HERS ratings and savings are calculated by a third party energy rating service. Actual savings will depend on a number of factors, including but not limited to daily activities, home maintenance practices, household size, use of appliances, lighting and internal climate control systems, lot orientation, and surrounding climate and weather conditions. Created on 06/25/2026: _____ Garage Orientation R / L: _____

